



DF28 系列离心通风机

DF28 Series Centrifugal Fan

> D 式参数表 (一)

机号	转速 (r/min)	序号 No.	流量 (m³/h)	全压 (Pa)	静压 (Pa)	内效率 (%)	轴功率 (kW)	电机功率	
7.10	2950	1	7378	10734	10332	83.7	25.9	37kW-2	
		2	9035	10623	10020	86.1	30.5		
		3	10707	10293	9445	87.1	34.6	45kW-2	
		4	12145	9817	8727	85.9	38.1		
		5	13599	9258	7891	83.3	41.5	55kW-2	
		6	15053	8516	6841	78.4	45.0		
		7	16506	7402	5388	70	48.2		
	1450	1	3626	2593	2496	83.7	3.1	5.5kW-4	
		2	4441	2567	2421	86.1	3.6		
		3	5263	2487	2282	87.1	4.1		
		4	5970	2372	2108	85.9	4.5	7.5kW-4	
		5	6684	2237	1907	83.3	4.9		
		6	7399	2057	1653	78.4	5.3		
		7	8113	1788	1302	70	5.7		
8D	1450	1	5188	3211	3087	83.7	5.6	7.5kW-4	
		2	6353	3178	2993	86.1	6.6		
		3	7529	3082	2822	87.1	7.5	11kW-4	
		4	8540	2942	2608	85.9	8.2		
		5	9562	2778	2359	83.3	9.0		
		6	10584	2560	2046	78.4	9.7		
		7	11606	2231	1613	70	10.4		
9D	1460	1	7437	4133	3974	83.7	10.3	15kW-4	
		2	9108	4091	3853	86.1	12.1	18.5kW-4	
		3	10793	3966	3633	87.1	13.7		
		4	12243	3787	3358	85.9	15.1		
		5	13709	3575	3037	83.3	16.5	22kW-4	
		6	15174	3293	2634	78.4	17.9		
		7	16639	2869	2076	70	19.1		
	960	1	4890	1787	1718	83.7	2.9	4kW-6	
		2	5988	1769	1666	86.1	3.4	5.5kW-6	
		3	7097	1715	1571	87.1	3.9		
		4	8050	1637	1452	85.9	4.3		
		5	9014	1546	1313	83.3	4.7		
	10D	1470	1	10272	5191	4993	83.7	17.7	30kW-4
			2	12579	5138	4841	86.1	20.9	
3			14907	4981	4564	87.1	23.8		
4			16909	4755	4218	85.9	26.1	37kW-4	
5			18933	4488	3815	83.3	28.5		
6			20957	4133	3308	78.4	30.9		
7			22981	3599	2607	70	33.1		
970		1	6778	2260	2174	83.7	5.1	7.5kW-6	
		2	8300	2237	2108	86.1	6.0	11kW-6	
		3	9837	2169	1987	87.1	6.8		
		4	11158	2070	1836	85.9	7.5		
		5	12493	1954	1661	83.3	8.2		
		6	13829	1800	1440	78.4	8.9		
		7	15164	1567	1135	70	9.5		

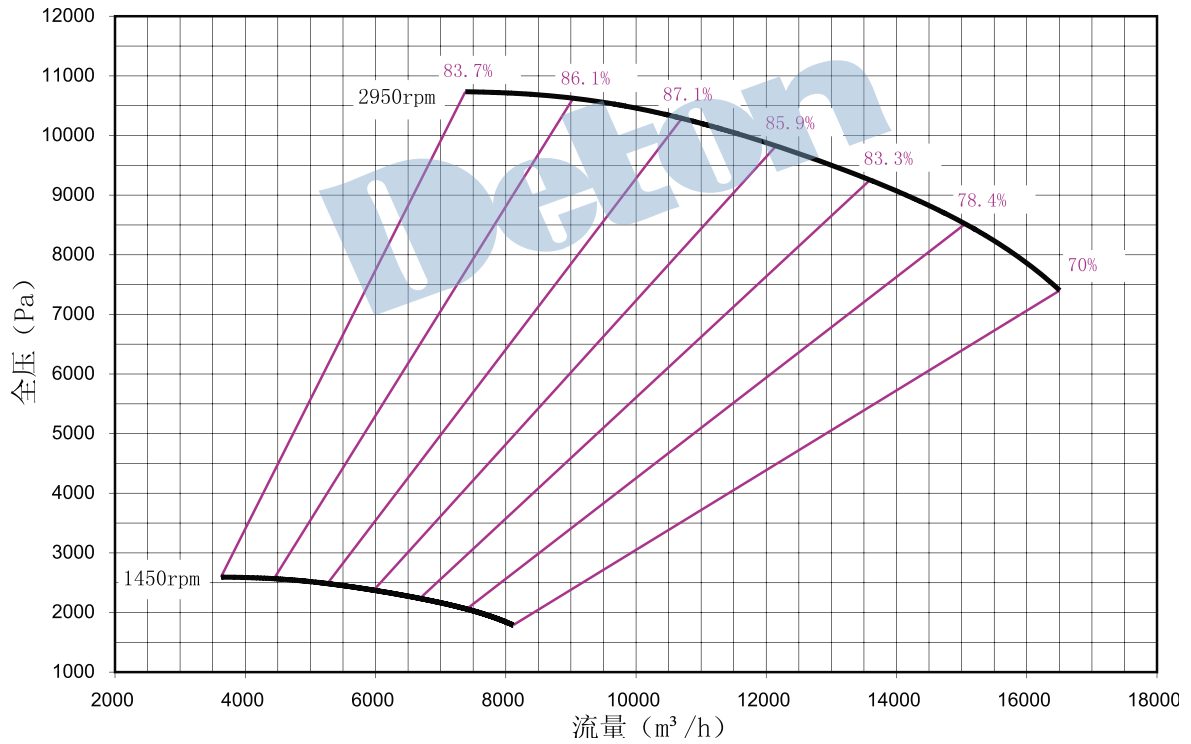
> D 式参数表 (二)

机号	转速 (r/min)	序号 No.	流量 (m³/h)	全压 (Pa)	静压 (Pa)	内效率 (%)	轴功率 (kW)	电机功率
11.2D	1480	1	14529	6632	6380	83.7	31.9	45kW-4
		2	17792	6564	6186	86.1	37.6	
		3	21086	6363	5833	87.1	42.7	55kW-4
		4	23918	6073	5390	85.9	46.9	
		5	26781	5731	4875	83.3	51.2	
		6	29644	5276	4227	78.4	55.6	75kW-4
		7	32507	4592	3331	70	59.5	
	980	1	9621	2908	2797	83.7	9.3	15kW-6
		2	11781	2878	2713	86.1	10.9	
		3	13962	2790	2557	87.1	12.4	
		4	15838	2663	2363	85.9	13.6	18.5kW-6
		5	17733	2513	2138	83.3	14.9	
6		19629	2313	1853	78.4	16.1		
12.5D	1480	1	20199	8308	7994	83.7	55.2	75kW-4
		2	24735	8222	7751	86.1	65.1	
		3	29314	7969	7308	87.1	74.0	90kW-4
		4	33251	7603	6752	85.9	81.3	
		5	37231	7173	6107	83.3	88.7	110kW-4
		6	41211	6601	5294	78.4	96.2	
	980	1	13375	3643	3505	83.7	16.0	22kW-6
		2	16379	3605	3399	86.1	18.9	
		3	19411	3494	3204	87.1	21.5	30kW-6
		4	22018	3334	2961	85.9	23.6	
		5	24653	3145	2678	83.3	25.7	
		6	27288	2894	2321	78.4	27.9	
14D	1480	1	28378	10497	10103	83.7	97.3	132kW-4
		2	34751	10387	9797	86.1	114.7	
		3	41184	10065	9236	87.1	130.4	160kW-4
		4	46715	9600	8533	85.9	143.3	
		5	52307	9055	7717	83.3	156.3	200kW-4
		6	57898	8329	6690	78.4	169.5	
	980	1	18791	4603	4430	83.7	28.3	45kW-6
		2	23011	4554	4296	86.1	33.3	
		3	27270	4413	4050	87.1	37.9	55kW-6
		4	30933	4209	3742	85.9	41.6	
		5	34635	3970	3384	83.3	45.4	
	16D	980	1	28049	5921	5695	83.7	55.1
2			34348	5860	5522	86.1	64.9	
3			40707	5681	5206	87.1	73.8	90kW-6
4			46174	5422	4811	85.9	81.1	
5			51701	5117	4351	83.3	88.5	110kW-6
6			57227	4712	3773	78.4	96.0	

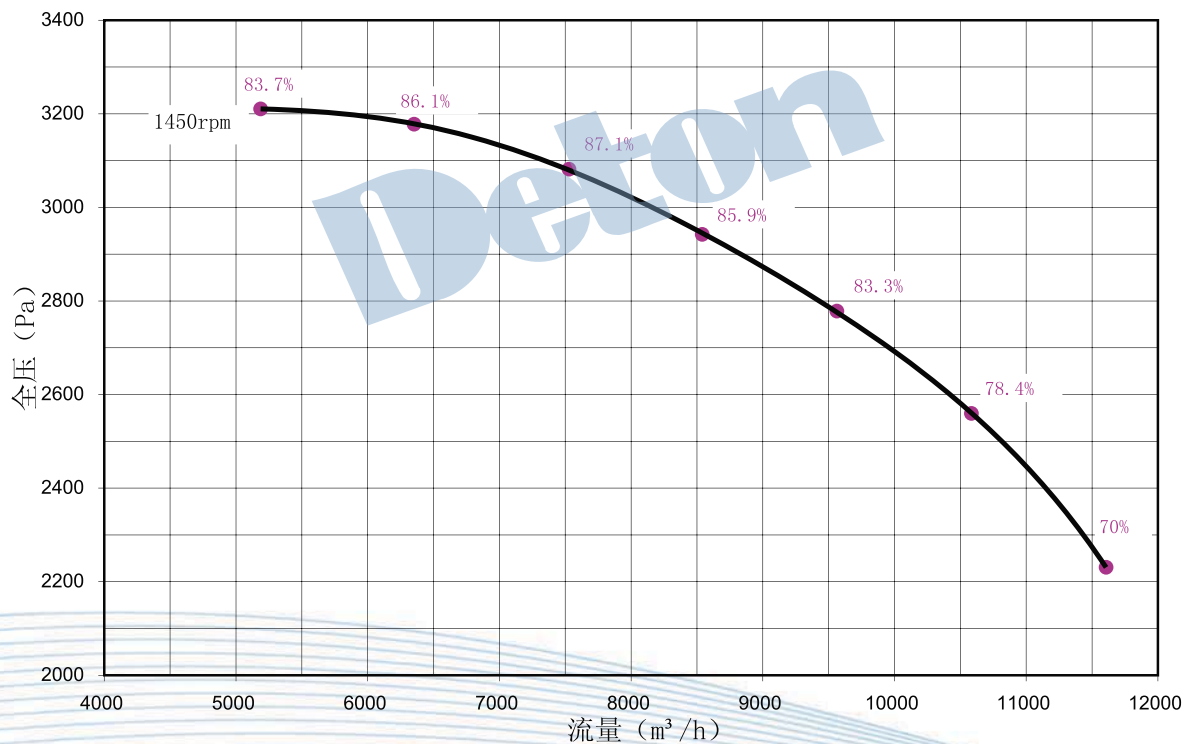


DF28 系列离心通风机 DF28 Series Centrifugal Fan

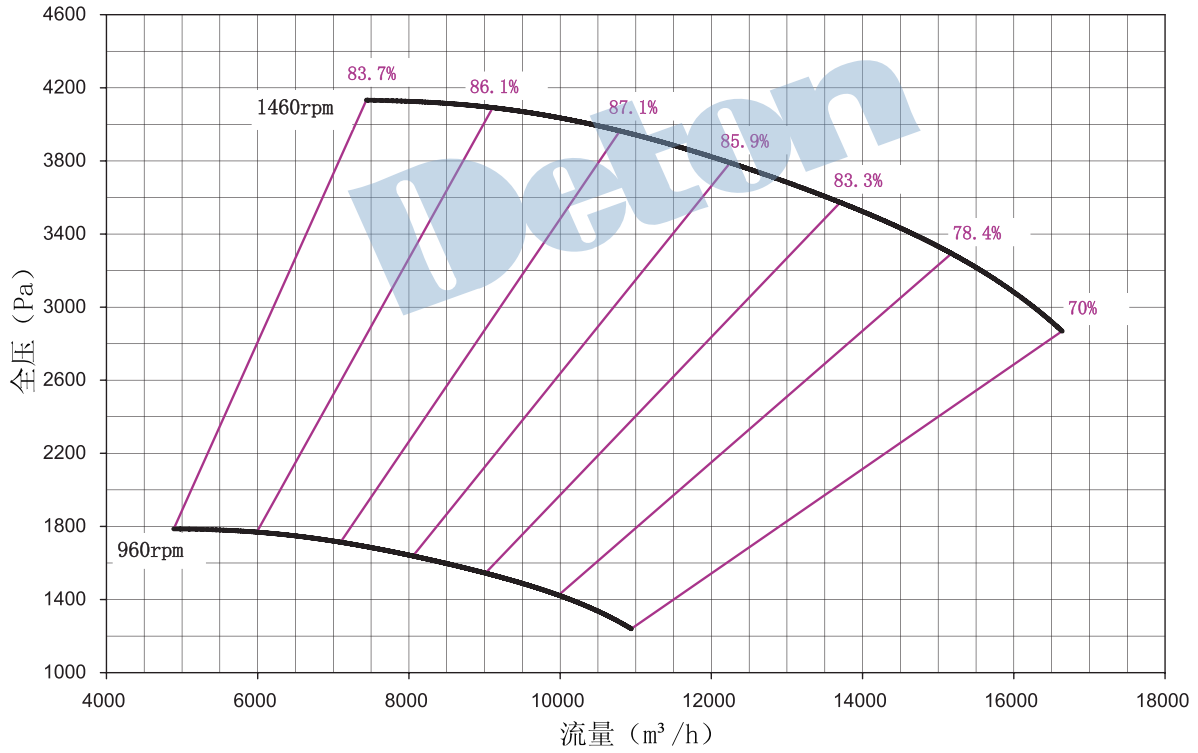
> № 7.1D 性能曲线图



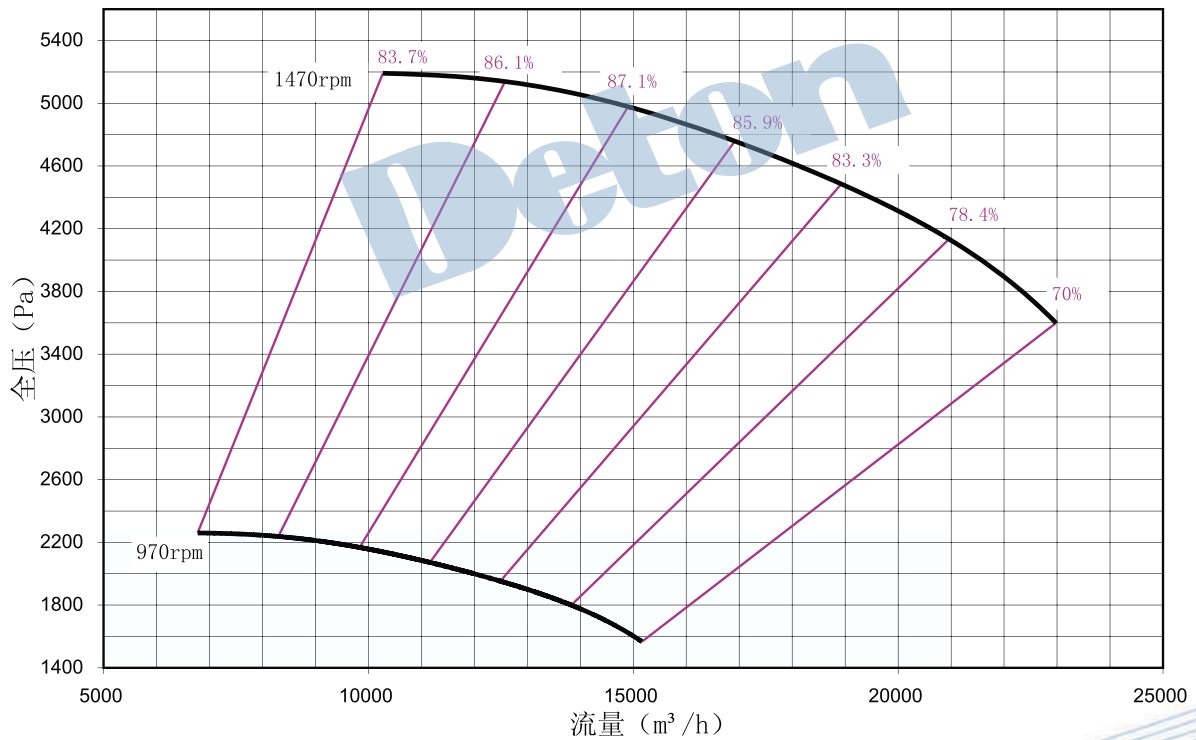
> № 8D 性能曲线图



> № 9D 性能曲线图



> № 10D 性能曲线图

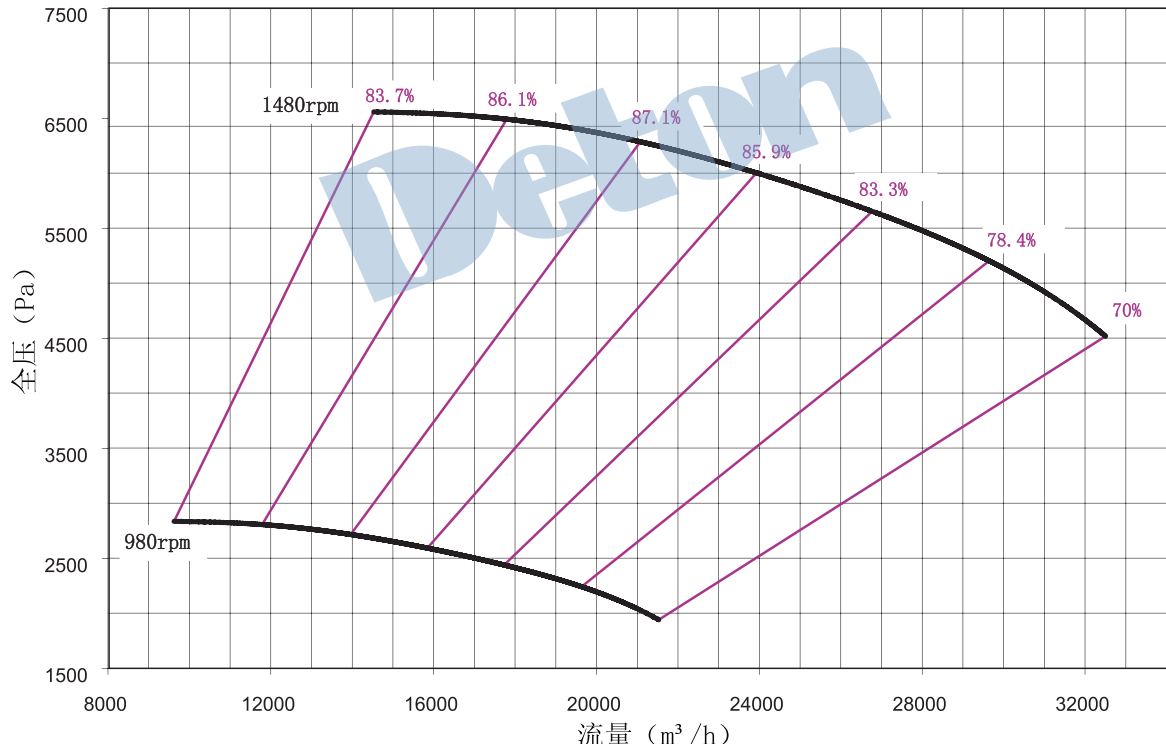




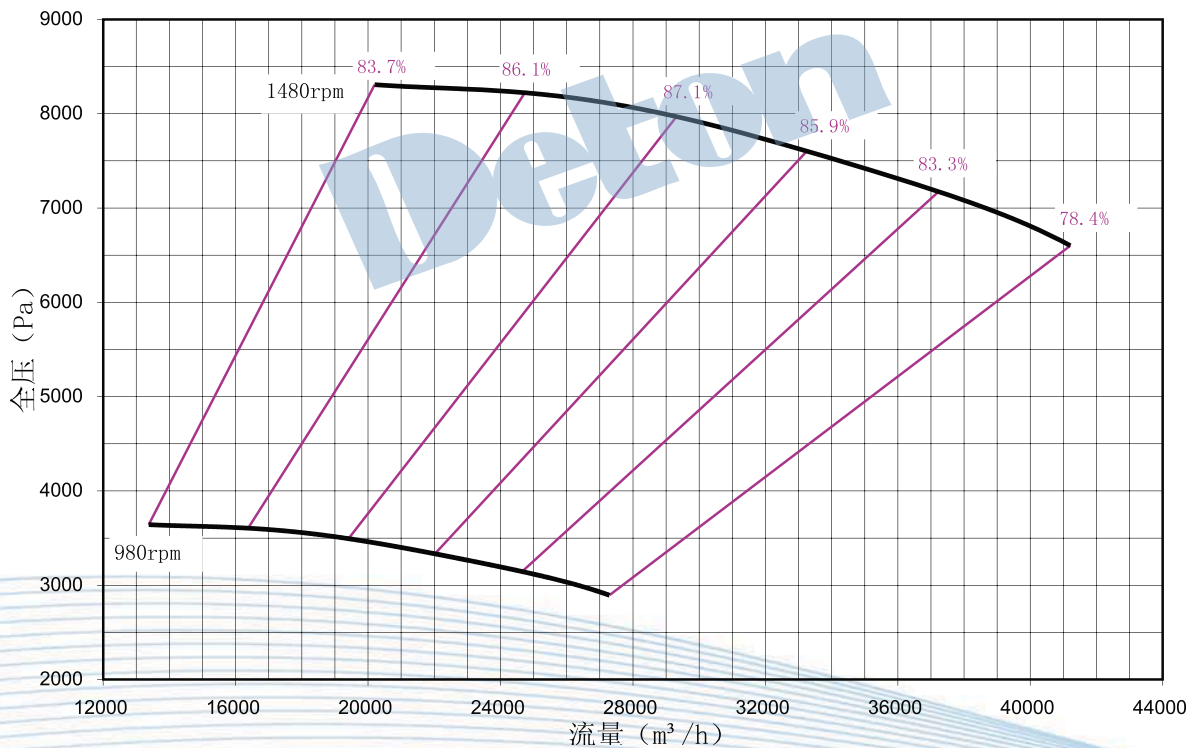
DF28 系列离心通风机

DF28 Series Centrifugal Fan

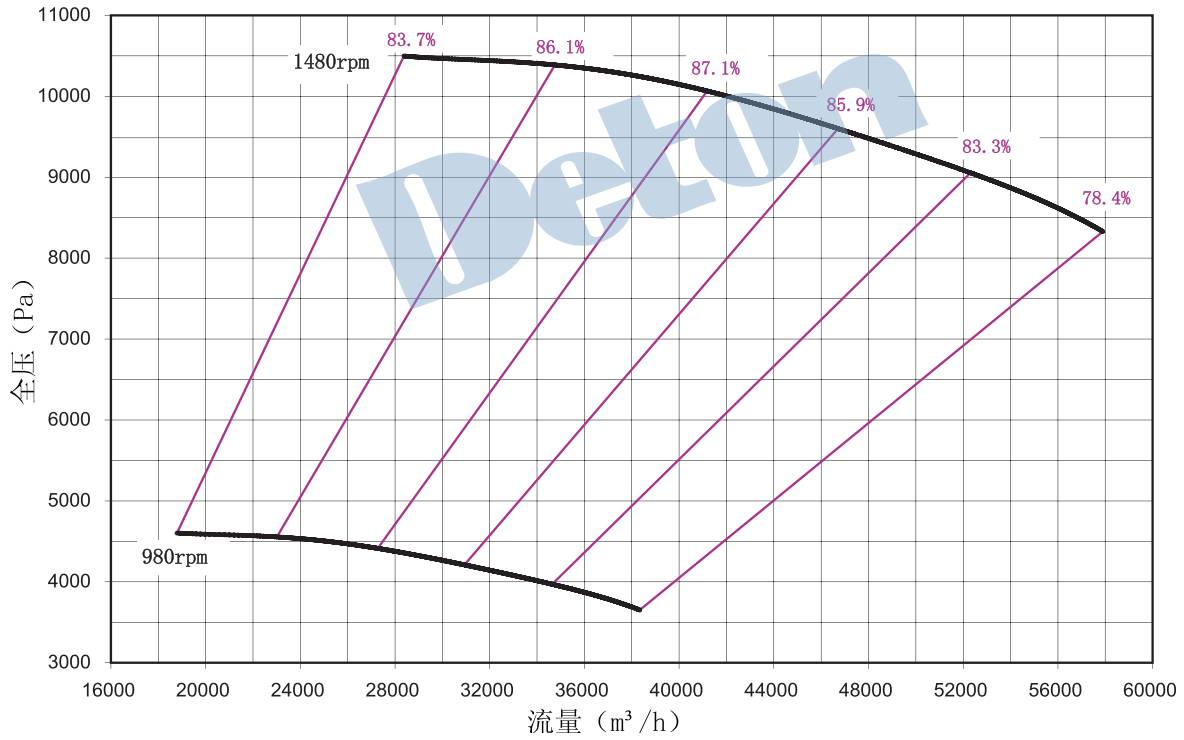
> № 11.2D 性能曲线图



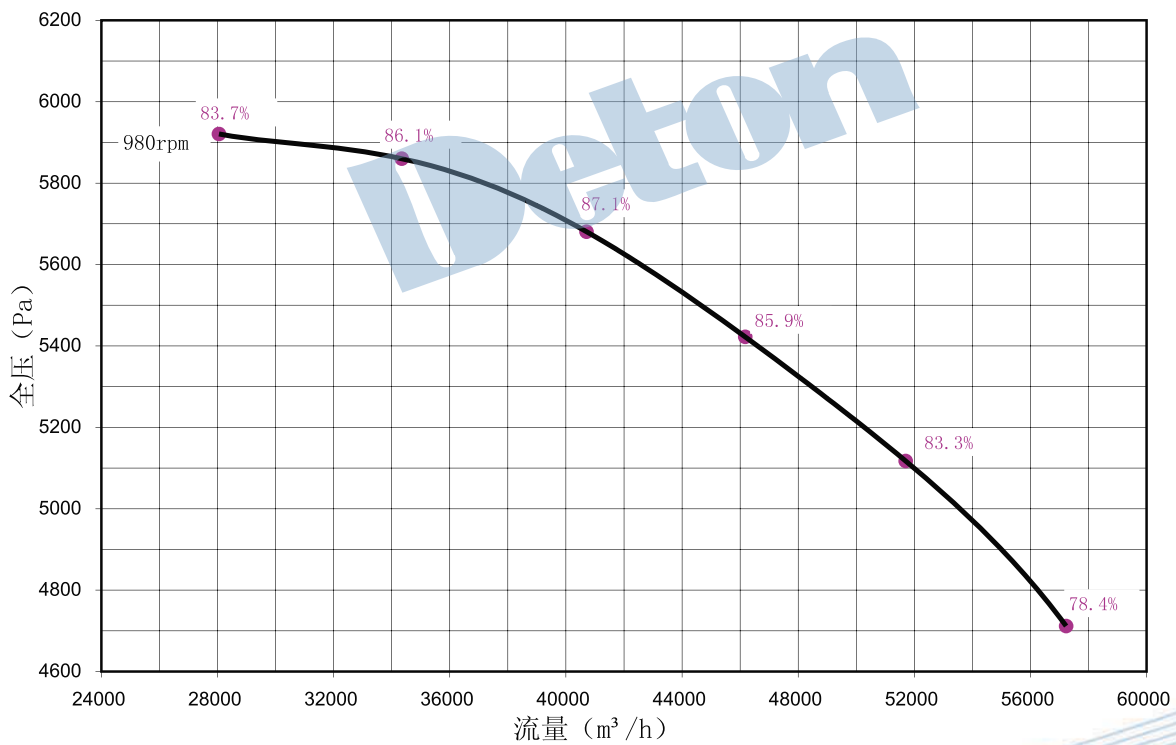
> № 12.5D 性能曲线图



> № 14D 性能曲线图



> № 16D 性能曲线图

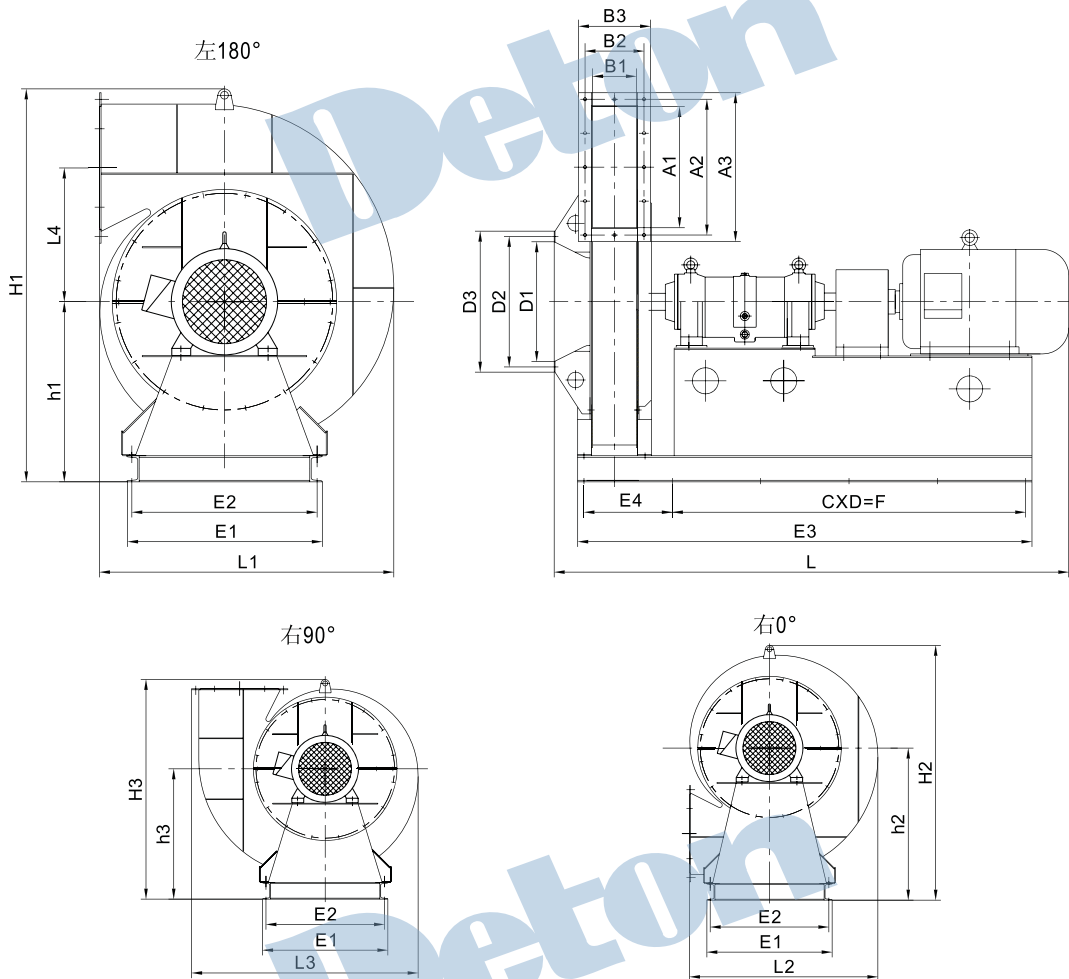




DF28 系列离心通风机

DF28 Series Centrifugal Fan

> D 式外形安装尺寸



机号 Model	出风口							进风口			
	A1	A2	A3	B1	B2	B3	n1-d1	D1	D2	D3	n2-d2
7.1D	463	520	570	168	226	276	12-Φ12	Φ450	Φ500	Φ540	8-Φ12
8D	522	578	628	189	247	297	18-Φ12	Φ500	Φ560	Φ610	12-Φ12
9D	587	643	693	213	271	321	18-Φ12	Φ560	Φ620	Φ670	12-Φ12
10D	653	709	759	236	294	344	18-Φ12	Φ630	Φ690	Φ740	12-Φ12
11.2D	731	790	840	265	325	375	18-Φ12	Φ710	Φ770	Φ820	12-Φ12
12.5D	817	876	925	295	356	405	20-Φ14	Φ800	Φ860	Φ910	16-Φ16
14D	914	984	1044	343	404	463	24-Φ14	Φ900	Φ970	Φ1030	16-Φ16
16D	1046	1120	1176	378	452	510	28-Φ16	Φ1000	Φ1070	Φ1130	16-Φ16

机号 Model	电机功率	外形安装尺寸																		
		L	L1	L2	L3	L4	H1	H2	H3	h1	h2	h3	E1	E2	E3	E4	C	D	F	n3-d3
7.1D	5.5kW-4	1669													1470	355.5	3	355.5	1066.5	10-Φ19
	7.5kW-4	1709												1508	365	365		1095		
	37kW-2	1969	1128	1128	1353	512	1505	1525	1315	690	910	780	750	710	1713	333	4	340	1332	12-Φ19
	45kW-2	2014												1748	340	346		1360		
	55kW-2	2124												1838	358	362		1432		
8D	7.5kW-4	1745	1270	1270	1516	577	1660	1690	1465	750	1000	870	840	800	1532	371	3	375	1113	10-Φ19
	11kW-4	1845													1610	390.5		400	1171.5	
9D	4kW-6	1785	1426	1426	1696	648.5	1850	1870	1615	840	1110	955	940	900	1548	375	3	375	1125	10-Φ19
	5.5kW-6	1785													1548	375		375	1125	
	15kW-4	1942													1673	325	4	325	1300	12-Φ19
	18.5kW-4	1972													1683	327		327	1308	
	22kW-4	2012													1718	334		334	1336	
10D	7.5kW-6	1932	1583	1583	1877	720	2035	2055	1770	915	1220	1045	1040	1000	1652	401	3	401	1203	10-Φ19
	11kW-6	1987													1702	413.5		413.5	1240.5	
	30kW-4	2092													1776	432		432	1296	
	37kW-4	2137													1814	441.5		441.5	1324.5	
11.2D	15kW-6	2232	1773	1773	2098	807	2280	2290	1990	1000	1330	1150	1160	1120	1916	467	3	467	1401	10-Φ19
	18.5kW-6	2267													1952	476		476	1428	
	45kW-6	2337													2016	492		492	1476	
	55kW-4	2422													2080	508		508	1524	
	75kW-4	2497													2148	525		525	1575	
12.5D	22kW-6	2342	1978	1978	2335	902	2580	2650	2260	1120	1520	1270	1250	1200	1984	494	4	360	1440	12-Φ19
	30kW-6	2412													2048			376	1504	
	75kW-4	2572													2180			409	1636	
	90kW-4	2622													2232			422	1688	
	110kW-4	2795													2304			440	1760	
14D	45kW-6	2931	2215	2215	2620	1010	2850	2930	2525	1240	1690	1440	1450	1400	2505	635	4	455	1820	12-Φ19
	55kW-6	2981													2557			468	1872	
	132kW-4	3306													2677			511	2044	
	160kW-4	3306													2729			511	2044	
	200kW-4	3306													2729			511	2044	
16D	75kW-6	3160	2625	2625	3045	1154	3150	3275	2800	1400	1940	1640	1450	1400	2720	677	5	404	2020	14-Φ19
	90kW-6	3210													2720			404	2020	
	110kW-6	3320													2720			404	2020	